



CONNECTING A SCUBAPRO® GALILEO 2 (G2), ALADIN SPORT MATRIX OR ALADIN H MATRIX TO LOGTRAK VIA BLUETOOTH® LOW ENERGY (BLE)



From a PC equipped with Windows 7 (and lower) Operating System

1. Install LogTRAK 1.4.0.0 (or higher) as an administrator
2. Plug in a Bluegiga BLED112 USB adapter to your PC
[More information about the **Bluegiga BLED112** USB adapter can be found at <http://www.silabs.com/products/wireless/Bluetooth®/Bluetooth®-smart-modules/Pages/bled112-Bluetooth®-smart-dongle.aspx>

Note:

Windows 7 [and lower] cannot access Bluetooth® Low Energy devices, therefore a generic Bluetooth® 4.0 [or higher] USB adapter will not be able to create the connection between your PC and your dive computer.

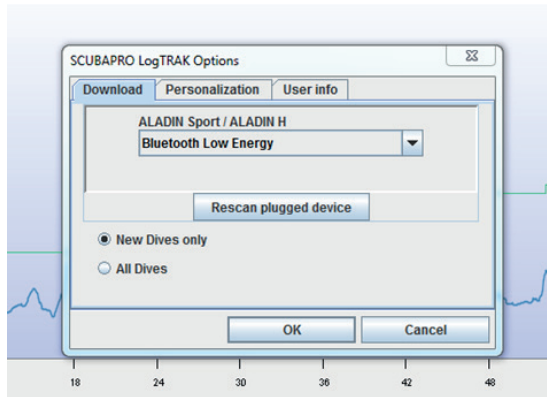
Use a **Bluegiga BLED112** USB adapter to connect your dive computer to your PC via LogTRAK.

3. Start LogTRAK on your PC





4. Use menu “Extras”, “Options...” or click on the icon



5. On tab “Download”, please select “Bluetooth® Low Energy” and click the “OK” button

Note:

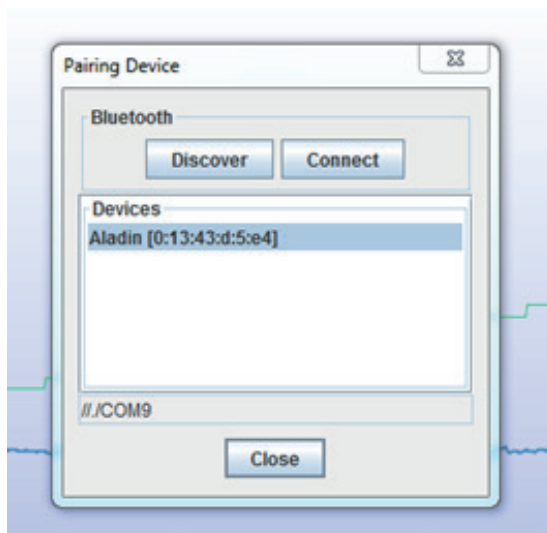
Unless you modify it, this setup will stay and you don't need to repeat steps “4” and “5” the next time you use LogTRAK.

- 6. Switch on your dive computer
- 7. Go to the Bluetooth® menu of your dive computer and activate Bluetooth® pairing mode [Please refer to your dive computer user's manual for more details on how to activate Bluetooth® pairing mode]

8. On LogTRAK, use menu “Dive”, “Download dives” or click on the icon



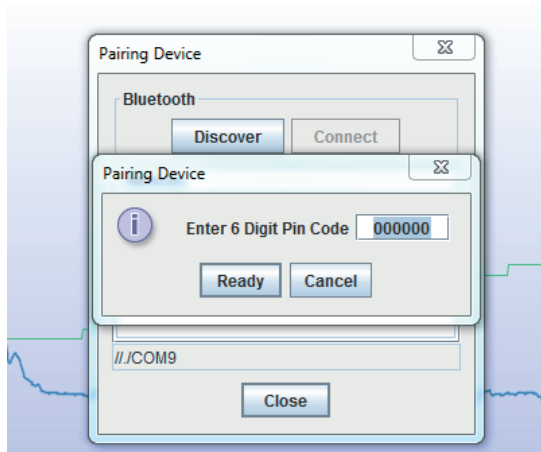
9. Select your dive computer and click on the “Connect” button [or double click on your dive computer from the devices list]





SCUBAPRO

Enter the 6 digit pin code shown on your dive computer display and click on the “Ready” button [or press “Enter” on your keyboard]



10. LogTRAK starts downloading dives from your dive computer.

Note:

If your dive computer is connected to your PC, you will see the connection symbol on your dive computer display.

